

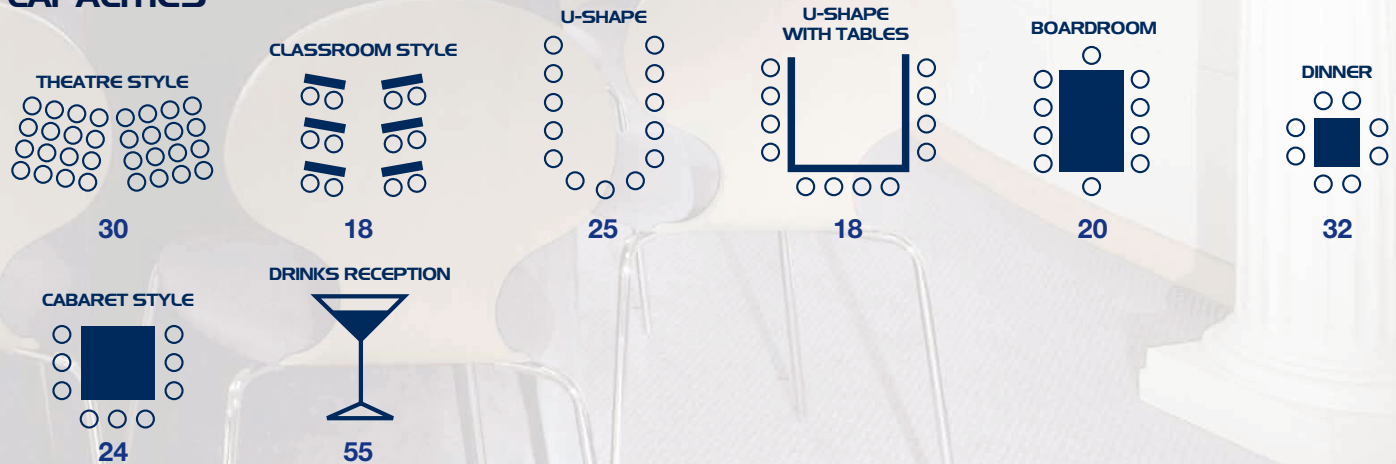


# PREMIER SUITE

The Premier Suite is a very versatile room overlooking the practice pitch at Portman Road.

With an intimate setting, this suite is ideal for smaller seminars, presentations and business lunches. It can be used in conjunction with the Britannia Executive Suites on the floor above, or the Boardroom. All events are serviced by an award winning Hospitality and Catering team, recognised by The British Hospitality Association.

## CAPACITIES



THE NUMBER ONE VENUE

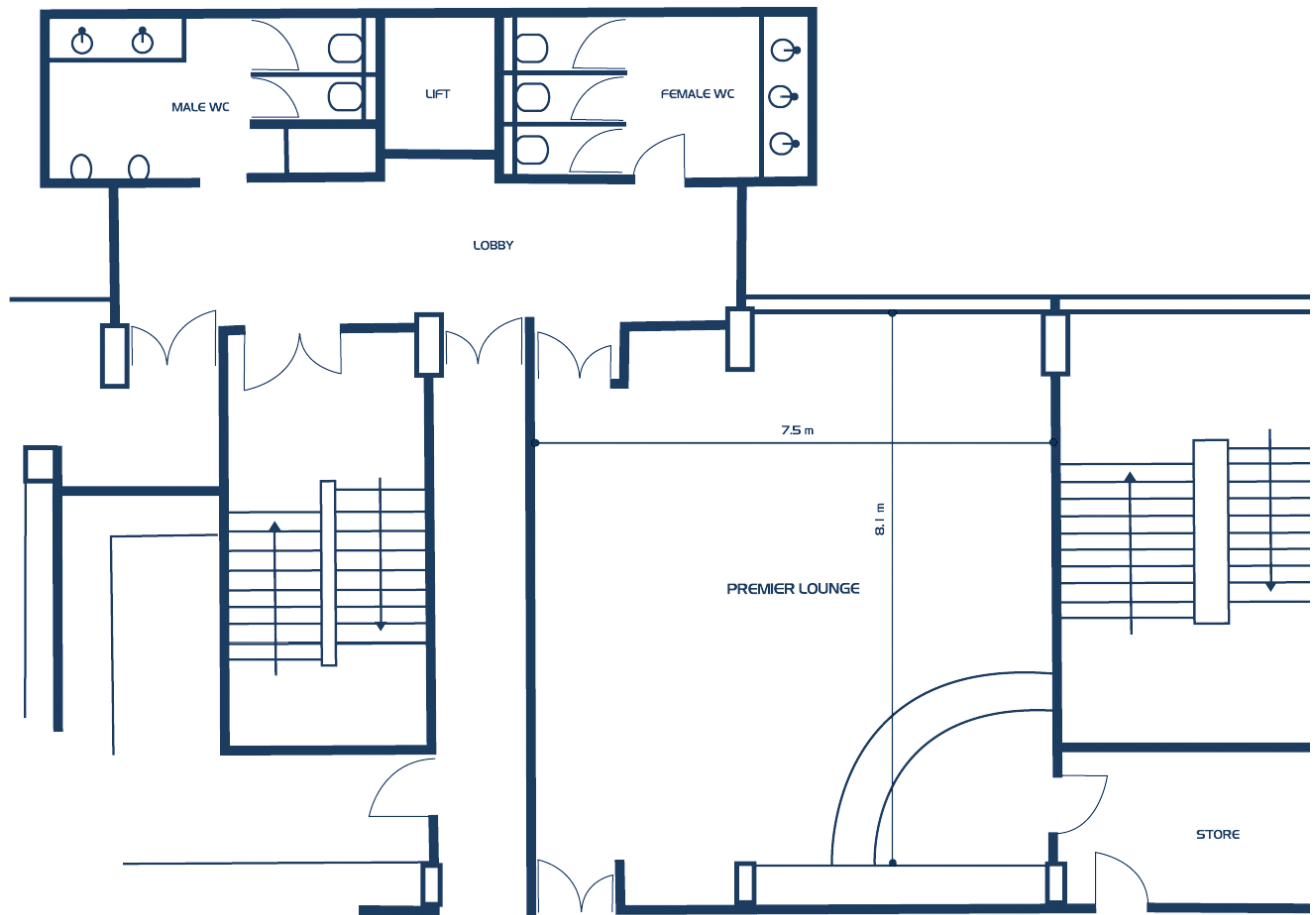
TEL: 01473 400580

WWW.NUMBERONEVENUE.CO.UK



**IPSWICH  
TOWN**

# PREMIER SUITE



## ROOM SPECIFICATIONS

- Disabled Access
- Wi Fi
- Air Conditioning
- Blackout Facility
- Bar
- Floor Area 52m<sup>2</sup>
- Room Height (min/max) 2.37m/2.37m
- Door Access (H/W) 2.04m/1.23m